



**EDC**

Dipping Cabinet

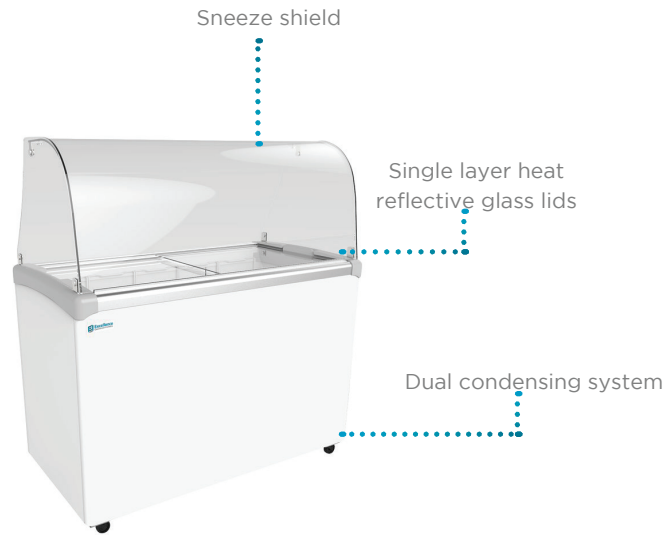
# KEY ASPECTS

## SPECIAL FEATURES:

- Frameless lids
- 4 casters, 2 locking
- Can holders with spill guard

## OPTIONS:

- Graphics
- Dipper well
- Night covers
- Locking device



EDC-4HC



EDC-4CHC



EDC-8HC



EDC-8CHC



Optional dipper well



Complies with 2017 DOE standards for commercial freezer and ice cream freezer

## TECHNICAL SUMMARY

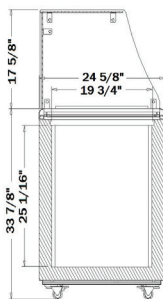
| MODEL    | SIZE   | ELECTRICAL |                   |                          | REFRIGERATION    |              |               | OTHER       |              |                    |                    |
|----------|--|------------|-------------------|--------------------------|------------------|--------------|---------------|-------------|--------------|--------------------|--------------------|
|          | Dimensions (inches)*<br>Width x Depth x Height | Cubic Feet | Net Weight (lbs.) | Shipping Weight (lbs.)** | Voltage/Hz/Phase | Running Amps | Compressor HP | Refrigerant | Temperature  | 3 G Tubs Displayed | Container Quantity |
| EDC-4HC  | 24 3/4 x 24 3/4 x 51 1/2                       | 5.0        | 178               | 188                      | 115/60/1         | 3.2          | 1/5           | R-290       | -15° to +5°F | 4                  | 140                |
| EDC-4CHC | 24 3/4 x 24 3/4 x 51 1/2                       | 5.0        | 177               | 187                      | 115/60/1         | 3.2          | 1/5           | R-290       | -15° to +5°F | 4                  | 110                |
| EDC-8HC  | 47 1/2 x 24 3/4 x 51 1/2                       | 12.5       | 272               | 283                      | 115/60/1         | 4.3          | 1/4           | R-290       | -15° to +5°F | 8                  | 72                 |
| EDC-8CHC | 47 1/2 x 24 3/4 x 51 1/2                       | 12.5       | 277               | 288                      | 115/60/1         | 4.3          | 1/4           | R-290       | -15° to +5°F | 8                  | 60                 |

\*Dimensions are all nominal lengths

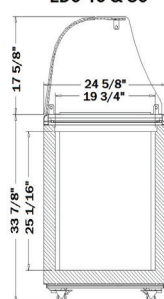
\*\*Does not include weight of pallet when needed



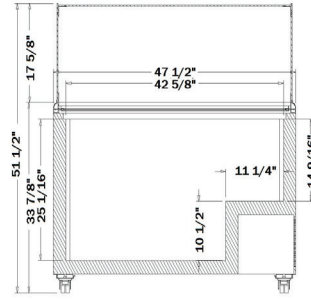
SIDE VIEW  
EDC 4 & 8



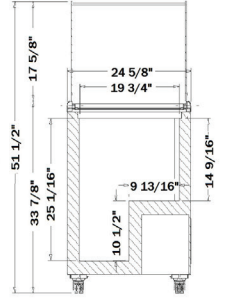
SIDE VIEW  
EDC 4C & 8C



FRONT VIEW  
EDC 8 & 8C



FRONT VIEW  
EDC 4 & 4C



500 S. Falkenburg Road  
Suite 200 | Tampa, FL 33619  
800.441.4014 | 813.870.0340  
www.excellenceindustries.com  
ver. 02.21