



**EDC**

## Dipping Cabinet

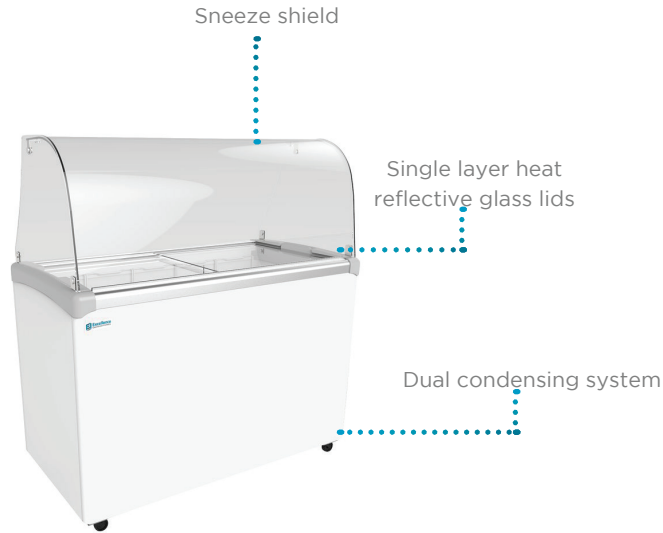
# KEY ASPECTS

## SPECIAL FEATURES:

- Frameless lids
- 4 casters, 2 locking
- Can holders with spill guard

## OPTIONS:

- Graphics
- Dipper well
- Night covers
- Locking device



EDC-4HC



EDC-4CHC



EDC-8HC



EDC-8CHC



Optional dipper well



Complies with 2017 DOE standards for commercial freezer and ice cream freezer

## TECHNICAL SUMMARY

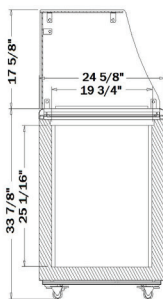
MODEL	SIZE	ELECTRICAL			REFRIGERATION			OTHER			
	Dimensions (inches)* Width x Depth x Height	Cubic Feet	Net Weight (lbs.)	Shipping Weight (lbs.)**	Voltage/Hz/Phase	Running Amps	Compressor HP	Refrigerant	Temperature	3 G Tubs Displayed	Container Quantity
EDC-4HC	24 3/4 x 24 3/4 x 51 1/2	5.0	178	188	115/60/1	3.2	1/5	R-290	-15° to +5°F	4	140
EDC-4CHC	24 3/4 x 24 3/4 x 51 1/2	5.0	177	187	115/60/1	3.2	1/5	R-290	-15° to +5°F	4	110
EDC-8HC	47 1/2 x 24 3/4 x 51 1/2	12.5	272	283	115/60/1	4.3	1/4	R-290	-15° to +5°F	8	72
EDC-8CHC	47 1/2 x 24 3/4 x 51 1/2	12.5	277	288	115/60/1	4.3	1/4	R-290	-15° to +5°F	8	60

\*Dimensions are all nominal lengths

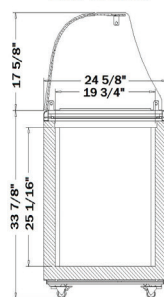
\*\*Does not include weight of pallet when needed



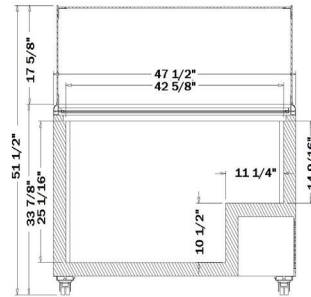
SIDE VIEW  
EDC 4 & 8



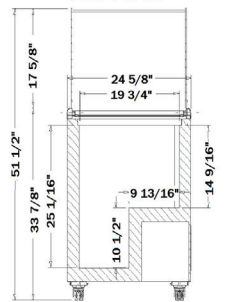
SIDE VIEW  
EDC 4C & 8C



FRONT VIEW  
EDC 8 & 8C



FRONT VIEW  
EDC 4 & 4C



4094 Paul Buchman Highway  
Plant City, FL 33565  
800.441.4014 | 813.870.0340  
www.excellenceindustries.com  
ver. 09.22